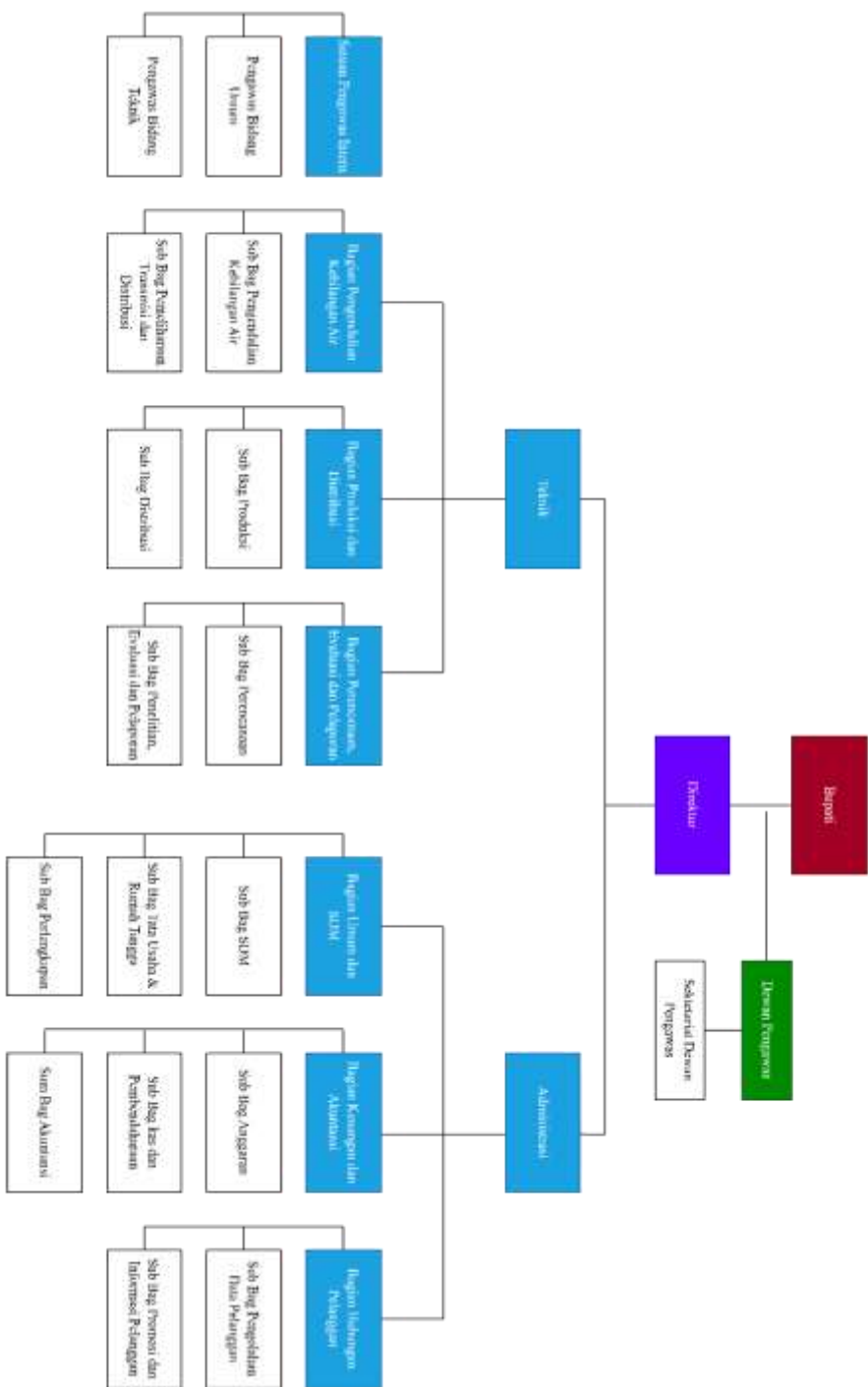


LAMPIRAN
Lampiran 1: Jadwal Penelitian

No	Kegiatan	2025-2026																							
		September				Oktober				November				Desember				Januari				Februari			
		1	2	3	4	1	2	3	4	1	2	3	4	1	2	3	4	1	2	3	4	1	2	3	4
1	Pengajuan outline dan rekomendasi pembimning	■																							
2	Konsultasi awal dan menyusun rencana kegiatan		■																						
3	Proses bimbingan untuk menyelesaikan proposal			■	■	■	■	■	■	■	■	■	■												
4	Seminar UP													■											
5	Revisi peoposal, pengumpulan dan pengolahan data														■	■	■	■	■						
6	Seminar hasil																			■					
6	Penulisan dan Bimbingan Skripsi																			■	■	■	■	■	■
7	Ujian skripsi, revisi skripsi, dan pengesahan skripsi																								■

Lampiran 2 : Struktur Organisasi



Lampiran 3 : Kuisisioner**KUISISIONER PENELITIAN**

Kepada Yth.

Pegawai Bagian Administrasi Perumda Air Minum Tirta Sukapura

Tasikmalaya

Dengan hormat,

Perkenalkan, saya Salsabila Maryam, mahasiswi Universitas Siliwangi, Jurusan Manajemen. Saat ini saya sedang penelitian sebagai salah satu syarat dalam menyelesaikan tugas akhir (skripsi) dengan judul **PENGARUH KOMPETENSI DAN DISIPLIN KERJA TERHADAP KINERJA PEGAWAI (Suatu Penelitian Pada Pegawai Bagian Administrasi Perumda Air Minum Tirta Sukapura Tasikmalaya)**. Saya meminta bantuan, partisipasi, dan dukungan Anda sebagai karyawan Perumda Air Minum Tirta Sukapura Tasikmalaya dengan mengisi kuisisioner yang telah disediakan dengan lengkap dan sejujur mungkin. Atas kesediaan dan bantuan Bapak/Ibu/Saudara/I mengisi kuisisioner ini, saya ucapkan terima kasih.

Hormat Saya,

Salsabila Maryam

Lampiran 3: KUISIONER (Lanjutan)

Petunjuk pengisian kuisisioner

1. Baca setiap pernyataan dengan cermat sebelum menjawab
2. Jawaban diberikan dengan cara memberi tanda ceklis (✓) pada salah satu pilihan jawaban yang paling sesuai dengan pendapat Anda
3. Setiap pernyataan menggunakan skala likert lima tingkat, dengan keterangan sebagai berikut:

SS : Sangat setuju

S : Setuju

N : Netral

TS : Tidak setuju

STS : Sangat tidak setuju

Kompetensi

No	Pernyataan	Jawaban				
		SS	S	KS	TS	STS
1	Pegawai mengetahui pengetahuan dasar yang diperlukan untuk pekerjaan.					
2	Pegawai mengerjakan tugas tanpa memahami pengetahuan dasarnya, tetapi pekerjaan tetap selesai.					
3	Pegawai mampu memahami instruksi atau tugas yang diberikan.					
4	Pegawai kurang paham dengan tugas yang diberikan atasan, tetapi tetap dikerjakan seperti biasa.					
5	Pegawai yakin dengan kemampuan kerja sehari-hari					
6	Pegawai merasa keterampilan					

	tambahan tidak diperlukan selama tugas utama bisa diselesaikan					
7	Pegawai menjunjung tinggi nilai integritas di tempat kerja.					
8	Pegawai menyesuaikan nilai-nilai kerja agar tugas selesai lebih mudah.					
9	Pegawai merasa tidak ada masalah jika jarang berkomunikasi dengan rekan kerja selama tugas selesai.					
10	Pegawai antusias pada saat menerima tugas tambahan dari perusahaan.					
11	Pegawai hanya akan menerima tugas tambahan jika ada insentif tambahan dari perusahaan.					

Disiplin Kerja

No	Pernyataan	Jawaban				
		SS	S	KS	TS	STS
1	Pegawai selalu hadir tepat waktu saat bekerja.					
2	Pegawai merasa absen sesekali tanpa alasan yang jelas adalah hal yang wajar.					
3	Pegawai selalu bekerja sesuai SOP yang berlaku.					
4	Pegawai merasa mematuhi peraturan terasa tidak penting selama hasil kerja baik.					
5	Pegawai merasa arahan pimpinan bisa diubah sesuai kebutuhan.					
6	Pegawai mampu menyelesaikan tugas dengan sangat tepat waktu.					
7	Pegawai merasa kecerobohan kecil dalam pekerjaan bukan masalah besar selama pekerjaan selesai.					
8	Pegawai menyelesaikan					

	pekerjaan dengan tepat waktu.					
9	Pegawai merasa tidak apa-apa jika meninggalkan pekerjaan yang belum selesai jika ada urusan lain.					

Kinerja Pegawai

No	Pernyataan	Jawaban				
		SS	S	KS	TS	STS
1	Pegawai selalu berusaha meningkatkan kualitas kerja yang dimiliki.					
2	Pegawai merasa hasil pekerjaan perlu dikoreksi ulang agar sesuai dengan standar perusahaan.					
3	Pegawai selalu memenuhi jumlah dari target yang diberikan perusahaan.					
4	Pegawai jarang menambah jumlah pekerjaan yang dapat diselesaikan dalam waktu tertentu.					
5	Pegawai sangat memperhatikan waktu untuk menyelesaikan pekerjaan agar dapat selesai sesuai waktu yang ditentukan.					
6	Pegawai merasa pekerjaan terkadang memerlukan waktu yang lebih lama dari semestinya.					
7	Pegawai memiliki prestasi dalam pekerjaan yang dimiliki.					
8	Pegawai kerap merasa hasil kerja yang dicapai tidak sebanding dengan waktu yang telah digunakan.					
9	Pegawai menyadari kesalahan dengan memperbaikinya sebelum ditegur oleh pimpinan.					
10	Pegawai cenderung menunggu petunjuk sebelum mengambil keputusan.					

Lampiran 4: Rekapitulasi Data Kuisisioner

Variabel X₁ (Kompetensi)

NO	X1.1	X1.2	X1.3	X1.4	X1.5	X1.6	X1.7	X1.8	X1.9	X1.10	X1.11	X1 Total
1	5	1	5	1	5	1	5	1	1	5	1	31
2	5	3	5	2	4	3	3	2	2	4	2	35
3	5	5	5	5	5	5	5	1	5	3	5	49
4	5	5	5	1	5	5	5	1	1	5	5	43
5	4	3	4	4	4	2	3	3	3	3	3	36
6	5	2	5	2	5	3	5	1	1	5	3	37
7	5	2	5	2	4	4	5	1	2	4	4	38
8	5	2	5	2	5	3	5	1	5	4	3	40
9	5	5	4	4	5	4	5	2	4	3	3	44
10	4	4	4	3	4	4	5	2	5	4	4	43
11	4	2	4	4	4	4	4	2	4	3	4	39
12	4	5	4	3	4	4	4	2	3	4	2	39
13	5	5	5	5	5	4	5	5	5	4	4	52
14	4	5	5	1	5	5	5	2	1	4	2	39
15	4	4	4	4	4	4	5	1	4	4	3	41
16	4	5	3	4	4	4	4	2	4	3	3	40
17	5	5	5	4	5	5	5	4	5	5	5	53
18	5	5	5	5	5	5	5	4	5	5	5	54
19	5	5	5	4	5	5	5	5	5	5	4	53
20	5	5	5	5	5	5	5	5	5	5	4	54
21	5	5	5	4	5	5	5	5	5	5	4	53
22	5	5	5	4	5	5	5	5	5	5	4	53
23	5	5	5	4	5	5	5	5	5	5	4	53
24	5	5	4	4	3	5	3	4	5	3	3	44
25	4	5	5	3	5	5	5	4	4	5	4	49
26	5	5	5	5	5	5	5	5	5	5	4	54
27	4	4	5	5	5	4	5	5	5	5	5	52
28	5	5	5	5	5	5	5	4	3	5	5	52
29	4	2	4	2	4	2	4	2	2	4	2	32
30	4	5	5	5	5	5	4	4	5	5	5	52
31	5	5	5	5	4	5	5	5	3	4	4	50
32	5	5	5	5	5	4	5	5	5	5	1	50
33	5	4	4	5	5	5	4	4	4	4	4	48
34	5	4	4	3	4	4	4	1	4	4	2	39
35	5	5	4	2	4	3	4	1	3	3	2	36
36	4	3	4	2	4	4	4	2	5	3	2	37
37	5	4	5	2	5	5	5	5	5	4	5	50
38	5	5	4	5	5	5	5	5	5	5	4	53
39	4	3	4	4	4	5	5	4	4	4	4	45
40	4	4	4	3	4	5	5	1	2	3	4	39
41	5	3	5	2	4	5	4	2	3	3	3	39
42	5	2	4	2	5	4	4	2	2	3	3	36
43	4	2	4	2	4	5	4	2	2	4	3	36
44	4	2	4	2	4	3	4	2	3	3	3	34
45	5	5	5	5	4	5	5	3	5	5	5	52
46	5	5	4	5	5	4	5	5	5	5	5	53
47	4	4	4	5	4	4	4	5	5	4	4	47
48	5	4	4	5	5	5	4	3	5	5	5	50
49	3	5	5	5	4	4	4	4	4	5	4	47
50	5	4	5	5	5	5	5	4	4	5	4	51
51	3	2	4	4	4	5	5	5	5	5	4	46
52	5	5	5	5	4	5	5	5	5	4	5	53
53	4	5	5	5	5	5	5	4	4	5	5	52
54	5	5	4	4	4	5	5	5	5	3	5	50
55	5	5	5	5	5	5	5	5	4	5	5	54
56	5	5	5	4	4	4	5	5	5	5	5	52
57	5	5	5	5	5	5	5	5	4	4	5	53
58	5	5	5	5	5	5	5	5	5	5	5	55
TOTAL	268	239	265	217	263	253	268	194	229	246	219	2661

Lampiran 4: Rekapitulasi Data Kuisisioner (Lanjutan)

Variabel X₂ (Disiplin Kerja)

No	X2.1	X2.2	X2.3	X2.4	X2.5	X2.6	X2.7	X2.8	X2.9	X2 Total
1	5	1	5	1	1	5	1	5	1	25
2	4	4	4	3	3	3	3	4	3	31
3	5	5	5	5	3	5	5	5	5	43
4	5	5	5	5	1	5	5	5	5	41
5	4	5	3	3	3	3	3	3	3	30
6	5	3	5	2	2	5	2	5	2	31
7	5	4	4	5	2	4	4	5	4	37
8	5	3	5	3	2	4	3	5	3	33
9	4	5	5	5	3	4	4	4	3	37
10	4	5	4	4	2	4	5	4	5	37
11	4	4	4	4	2	4	4	4	4	34
12	4	3	4	4	3	4	4	4	5	35
13	5	5	5	5	4	5	4	5	5	43
14	5	3	5	3	3	5	3	5	4	36
15	4	4	4	4	4	5	4	5	4	38
16	4	4	4	4	3	4	4	4	4	35
17	5	5	5	5	4	5	5	5	5	44
18	5	5	4	5	5	5	4	5	5	43
19	5	5	5	5	4	5	5	5	5	44
20	5	5	5	5	5	5	5	5	5	45
21	5	5	5	5	4	5	5	5	5	44
22	5	5	5	5	4	5	5	5	5	44
23	5	5	5	5	4	5	5	5	5	44
24	5	5	5	5	4	5	3	5	4	41
25	5	4	5	5	5	4	4	4	4	40
26	5	5	5	5	4	5	5	5	5	44
27	4	4	5	5	5	5	4	5	5	42
28	4	5	5	3	5	5	5	5	5	42
29	4	2	4	2	2	4	2	4	2	26
30	4	5	5	3	5	5	5	5	5	42
31	5	4	5	5	3	5	4	5	5	41
32	5	5	5	5	4	5	5	5	5	44
33	4	3	5	4	4	5	5	5	4	39
34	4	4	4	4	4	4	4	5	4	37
35	3	4	4	4	2	3	3	3	3	29
36	4	5	4	5	2	4	3	4	4	35
37	5	5	5	5	4	4	4	4	5	41
38	4	4	5	4	4	4	5	4	4	38
39	4	3	5	4	4	4	4	5	5	38
40	4	4	5	2	2	4	5	4	5	35
41	5	4	4	5	3	4	5	4	4	38
42	4	5	4	4	3	4	4	4	4	36
43	5	4	5	5	2	5	5	4	2	37
44	5	4	5	4	2	4	4	4	5	37
45	5	5	5	5	5	5	4	4	4	42
46	5	5	5	5	5	5	4	5	5	44
47	4	4	4	5	5	5	5	5	5	42
48	4	3	5	5	5	5	5	5	4	41
49	5	4	5	5	5	4	4	5	5	42
50	4	4	4	4	4	5	4	4	4	37
51	4	3	5	4	5	5	5	5	5	41
52	5	5	5	5	5	5	4	4	5	43
53	5	5	4	5	4	5	5	5	5	43
54	4	4	4	5	5	4	4	5	4	39
55	5	5	5	5	5	5	5	5	5	45
56	4	4	5	5	5	5	5	5	5	43
57	5	5	3	5	5	5	5	3	5	41
58	5	5	5	5	5	5	5	5	5	45
Total	263	247	268	251	212	264	244	265	250	2264

Lampiran 4: Rekapitulasi Data Kuisisioner (Lanjutan)

Variabel Y (Kinerja Pegawai)

No	Y.1	Y.2	Y.3	Y.4	Y.5	Y.6	Y.7	Y.8	Y.9	Y.10	Y Total
1	5	1	3	3	4	1	4	1	4	3	29
2	4	2	3	3	4	3	4	3	4	2	32
3	5	2	5	3	5	2	5	5	5	2	39
4	5	1	5	1	5	1	5	1	5	1	30
5	3	3	3	3	3	3	3	3	3	3	30
6	5	1	5	2	5	2	5	2	4	2	33
7	5	2	4	4	5	2	5	4	4	2	37
8	5	2	4	3	5	2	5	3	4	2	35
9	4	2	4	3	4	3	3	3	3	3	32
10	4	2	4	4	4	2	4	4	5	3	36
11	4	2	4	4	4	2	4	3	4	2	33
12	4	2	4	3	4	3	3	3	3	3	32
13	5	1	5	5	5	4	5	4	5	5	44
14	5	2	4	3	3	5	3	3	3	3	34
15	4	2	4	3	4	2	4	2	4	2	31
16	4	2	4	3	4	3	3	2	4	2	31
17	5	5	5	5	5	4	5	5	5	5	49
18	5	5	5	5	5	5	5	5	5	5	50
19	5	5	5	5	5	4	5	5	5	5	49
20	5	5	5	5	5	4	5	5	5	5	49
21	5	5	5	5	5	4	5	5	5	5	49
22	5	5	5	5	5	4	5	5	5	5	49
23	5	5	5	5	5	4	5	5	5	5	49
24	5	5	4	3	3	1	3	3	5	3	35
25	5	4	5	5	5	4	5	4	5	4	46
26	5	5	5	5	5	4	5	5	5	5	49
27	4	4	5	3	5	4	5	5	5	5	45
28	4	5	5	5	5	5	5	3	3	5	45
29	4	2	4	2	4	2	4	2	4	2	30
30	4	5	5	5	5	5	5	3	5	5	47
31	5	3	5	5	5	4	4	4	5	5	45
32	5	5	5	5	5	5	5	5	4	3	47
33	5	5	4	5	4	4	5	5	4	4	45
34	4	5	4	2	4	3	4	3	4	3	36
35	4	3	3	3	4	2	4	3	4	2	32
36	4	1	3	4	5	2	3	2	4	3	31
37	4	4	5	4	5	5	5	5	5	5	47
38	5	4	4	4	4	5	5	5	4	4	44
39	4	3	5	4	5	4	4	4	5	5	43
40	4	1	3	2	4	2	4	2	5	2	29
41	4	2	4	3	5	2	5	2	4	2	33
42	4	2	3	2	4	5	4	2	4	2	32
43	4	2	4	4	5	2	4	2	4	2	33
44	5	2	4	5	4	3	4	3	4	2	36
45	5	5	5	5	4	4	5	5	5	4	47
46	5	5	5	5	4	4	4	4	5	4	45
47	4	5	4	4	4	4	4	4	4	5	42
48	5	5	5	3	4	4	4	4	5	5	44
49	5	5	5	5	4	4	4	5	4	4	45
50	5	5	5	5	5	4	4	4	4	4	45
51	5	5	5	5	4	4	3	4	5	5	45
52	4	5	5	5	5	4	4	4	5	5	46
53	4	4	5	4	4	4	5	5	5	5	45
54	5	5	5	5	4	3	5	5	5	5	47
55	3	5	5	5	5	5	5	5	5	5	48
56	5	5	5	5	5	4	4	5	5	5	48
57	5	5	5	5	3	5	5	3	5	5	46
58	5	5	5	5	5	5	5	5	5	5	50
Total	263	205	258	231	258	200	253	215	258	214	2355

Lampiran 5: Data Successive Interval

Variabel X_1 (Komptensi)

No	X1.1	X1.2	X1.3	X1.4	X1.5	X1.6	X1.7	X1.8	X1.9	X1.10	X1.11	TOTAL
1	3.776	1.000	4.140	1.000	4.192	1.000	3.586	1.000	1.000	3.189	1.000	24.882
2	3.776	2.685	4.140	1.997	2.656	2.148	1.000	1.901	1.739	2.019	1.870	25.930
3	3.776	4.166	4.140	4.021	4.192	4.166	3.586	1.000	3.750	1.000	4.351	38.146
4	3.776	4.166	4.140	1.000	4.192	4.166	3.586	1.000	1.000	3.189	4.351	34.564
5	2.273	2.685	2.600	2.982	2.656	1.640	1.000	2.285	2.190	1.000	2.529	23.839
6	3.776	2.104	4.140	1.997	4.192	2.148	3.586	1.000	1.000	3.189	2.529	29.660
7	3.776	2.104	4.140	1.997	2.656	2.886	3.586	1.000	1.739	2.019	3.258	29.161
8	3.776	2.104	4.140	1.997	4.192	2.148	3.586	1.000	3.750	2.019	2.529	31.240
9	3.776	4.166	2.600	2.982	4.192	2.886	3.586	1.901	2.681	1.000	2.529	32.298
10	2.273	3.072	2.600	2.528	2.656	2.886	3.586	1.901	3.750	2.019	3.258	30.528
11	2.273	2.104	2.600	2.982	2.656	2.886	2.124	1.901	2.681	1.000	3.258	26.465
12	2.273	4.166	2.600	2.528	2.656	2.886	2.124	1.901	2.190	2.019	1.870	27.211
13	3.776	4.166	4.140	4.021	4.192	2.886	3.586	3.516	3.750	2.019	3.258	39.308
14	2.273	4.166	4.140	1.000	4.192	4.166	3.586	1.901	1.000	2.019	1.870	30.310
15	2.273	3.072	2.600	2.982	2.656	2.886	3.586	1.000	2.681	2.019	2.529	28.283
16	2.273	4.166	1.000	2.982	2.656	2.886	2.124	1.901	2.681	1.000	2.529	26.197
17	3.776	4.166	4.140	2.982	4.192	4.166	3.586	2.590	3.750	3.189	4.351	40.887
18	3.776	4.166	4.140	4.021	4.192	4.166	3.586	2.590	3.750	3.189	4.351	41.925
19	3.776	4.166	4.140	2.982	4.192	4.166	3.586	3.516	3.750	3.189	3.258	40.720
20	3.776	4.166	4.140	4.021	4.192	4.166	3.586	3.516	3.750	3.189	3.258	41.758
21	3.776	4.166	4.140	2.982	4.192	4.166	3.586	3.516	3.750	3.189	3.258	40.720
22	3.776	4.166	4.140	2.982	4.192	4.166	3.586	3.516	3.750	3.189	3.258	40.720
23	3.776	4.166	4.140	2.982	4.192	4.166	3.586	3.516	3.750	3.189	3.258	40.720
24	3.776	4.166	2.600	2.982	1.000	4.166	1.000	2.590	3.750	1.000	2.529	29.559
25	2.273	4.166	4.140	2.528	4.192	4.166	3.586	2.590	2.681	3.189	3.258	36.767
26	3.776	4.166	4.140	4.021	4.192	4.166	3.586	3.516	3.750	3.189	3.258	41.758
27	2.273	3.072	4.140	4.021	4.192	2.886	3.586	3.516	3.750	3.189	4.351	38.974
28	3.776	4.166	4.140	4.021	4.192	4.166	3.586	2.590	2.190	3.189	4.351	40.365
29	2.273	2.104	2.600	1.997	2.656	1.640	2.124	1.901	1.739	2.019	1.870	22.923
30	2.273	4.166	4.140	4.021	4.192	4.166	2.124	2.590	3.750	3.189	4.351	38.960
31	3.776	4.166	4.140	4.021	2.656	4.166	3.586	3.516	2.190	2.019	3.258	37.492
32	3.776	4.166	4.140	4.021	4.192	2.886	3.586	3.516	3.750	3.189	1.000	38.220
33	3.776	3.072	2.600	4.021	4.192	4.166	2.124	2.590	2.681	2.019	3.258	34.498
34	3.776	3.072	2.600	2.528	2.656	2.886	2.124	1.000	2.681	2.019	1.870	27.212
35	3.776	4.166	2.600	1.997	2.656	2.148	2.124	1.000	2.190	1.000	1.870	25.527
36	2.273	2.685	2.600	1.997	2.656	2.886	2.124	1.901	3.750	1.000	1.870	25.741
37	3.776	3.072	4.140	1.997	4.192	4.166	3.586	3.516	3.750	2.019	4.351	38.564
38	3.776	4.166	2.600	4.021	4.192	4.166	3.586	3.516	3.750	3.189	3.258	40.219
39	2.273	2.685	2.600	2.982	2.656	4.166	3.586	2.590	2.681	2.019	3.258	31.496
40	2.273	3.072	2.600	2.528	2.656	4.166	3.586	1.000	1.739	1.000	3.258	27.877
41	3.776	2.685	4.140	1.997	2.656	4.166	2.124	1.901	2.190	1.000	2.529	29.162
42	3.776	2.104	2.600	1.997	4.192	2.886	2.124	1.901	1.739	1.000	2.529	26.848
43	2.273	2.104	2.600	1.997	2.656	4.166	2.124	1.901	1.739	2.019	2.529	26.107
44	2.273	2.104	2.600	1.997	2.656	2.148	2.124	1.901	2.190	1.000	2.529	23.521
45	3.776	4.166	4.140	4.021	2.656	4.166	3.586	2.285	3.750	3.189	4.351	40.084
46	3.776	4.166	2.600	4.021	4.192	2.886	3.586	3.516	3.750	3.189	4.351	40.032
47	2.273	3.072	2.600	4.021	2.656	2.886	2.124	3.516	3.750	2.019	3.258	32.174
48	3.776	3.072	2.600	4.021	4.192	4.166	2.124	2.285	3.750	3.189	4.351	37.525
49	1.000	4.166	4.140	4.021	2.656	2.886	2.124	2.590	2.681	3.189	3.258	32.710
50	3.776	3.072	4.140	4.021	4.192	4.166	3.586	2.590	2.681	3.189	3.258	38.669
51	1.000	2.104	2.600	2.982	2.656	4.166	3.586	3.516	3.750	3.189	3.258	32.808
52	3.776	4.166	4.140	4.021	2.656	4.166	3.586	3.516	3.750	2.019	4.351	40.145
53	2.273	4.166	4.140	4.021	4.192	4.166	3.586	2.590	2.681	3.189	4.351	39.353
54	3.776	4.166	2.600	2.982	2.656	4.166	3.586	3.516	3.750	1.000	4.351	36.549
55	3.776	4.166	4.140	4.021	4.192	4.166	3.586	3.516	2.681	3.189	4.351	41.782
56	3.776	4.166	4.140	2.982	2.656	2.886	3.586	3.516	3.750	3.189	4.351	38.997
57	3.776	4.166	4.140	4.021	4.192	4.166	3.586	3.516	2.681	2.019	4.351	40.612
58	3.776	4.166	4.140	4.021	4.192	4.166	3.586	3.516	3.750	3.189	4.351	42.851
TOTAL	186.389	201.544	201.544	176.813	201.544	201.544	176.814	143.898	169.632	135.439	186.389	1981.552

Lampiran 5: Data *Succesive Interval* (Lanjutan)

Variabel X₂ (Disiplin Kerja)

NO	X2.1	X2.2	X2.3	X2.4	X2.6	X2.7	X2.8	X2.9	X2.10	TOTAL
1	4.192	1.000	3.776	1.000	1.000	3.687	1.000	3.662	1.000	20.317
2	2.656	3.060	2.273	2.290	2.714	1.000	2.237	2.210	2.248	20.688
3	4.192	4.301	3.776	4.140	2.714	3.687	4.357	3.662	4.192	35.020
4	4.192	4.301	3.776	4.140	1.000	3.687	4.357	3.662	4.192	33.306
5	2.656	4.301	1.000	2.290	2.714	1.000	2.237	1.000	2.248	19.446
6	4.192	2.177	3.776	1.734	2.038	3.687	1.640	3.662	1.734	24.639
7	4.192	3.060	2.273	4.140	2.038	2.238	3.105	3.662	2.939	27.645
8	4.192	2.177	3.776	2.290	2.038	2.238	2.237	3.662	2.248	24.858
9	2.656	4.301	3.776	4.140	2.714	2.238	3.105	2.210	2.248	27.388
10	2.656	4.301	2.273	2.919	2.038	2.238	4.357	2.210	4.192	27.184
11	2.656	3.060	2.273	2.919	2.038	2.238	3.105	2.210	2.939	23.437
12	2.656	2.177	2.273	2.919	2.714	2.238	3.105	2.210	4.192	24.484
13	4.192	4.301	3.776	4.140	3.324	3.687	3.105	3.662	4.192	34.378
14	4.192	2.177	3.776	2.290	2.714	3.687	2.237	3.662	2.939	27.673
15	2.656	3.060	2.273	2.919	3.324	3.687	3.105	3.662	2.939	27.624
16	2.656	3.060	2.273	2.919	2.714	2.238	3.105	2.210	2.939	24.113
17	4.192	4.301	3.776	4.140	3.324	3.687	4.357	3.662	4.192	35.630
18	4.192	4.301	2.273	4.140	4.351	3.687	3.105	3.662	4.192	33.901
19	4.192	4.301	3.776	4.140	3.324	3.687	4.357	3.662	4.192	35.630
20	4.192	4.301	3.776	4.140	4.351	3.687	4.357	3.662	4.192	36.657
21	4.192	4.301	3.776	4.140	3.324	3.687	4.357	3.662	4.192	35.630
22	4.192	4.301	3.776	4.140	3.324	3.687	4.357	3.662	4.192	35.630
23	4.192	4.301	3.776	4.140	3.324	3.687	4.357	3.662	4.192	35.630
24	4.192	4.301	3.776	4.140	3.324	3.687	2.237	3.662	2.939	32.257
25	4.192	3.060	3.776	4.140	4.351	2.238	3.105	2.210	2.939	30.010
26	4.192	4.301	3.776	4.140	3.324	3.687	4.357	3.662	4.192	35.630
27	2.656	3.060	3.776	4.140	4.351	3.687	3.105	3.662	4.192	32.628
28	2.656	4.301	3.776	2.290	4.351	3.687	4.357	3.662	4.192	33.271
29	2.656	1.523	2.273	1.734	2.038	2.238	1.640	2.210	1.734	18.045
30	2.656	4.301	3.776	2.290	4.351	3.687	4.357	3.662	4.192	33.271
31	4.192	3.060	3.776	4.140	2.714	3.687	3.105	3.662	4.192	32.526
32	4.192	4.301	3.776	4.140	3.324	3.687	4.357	3.662	4.192	35.630
33	2.656	2.177	3.776	2.919	3.324	3.687	4.357	3.662	2.939	29.497
34	2.656	3.060	2.273	2.919	3.324	2.238	3.105	3.662	2.939	26.175
35	1.000	3.060	2.273	2.919	2.038	1.000	2.237	1.000	2.248	17.775
36	2.656	4.301	2.273	4.140	2.038	2.238	2.237	2.210	2.939	25.031
37	4.192	4.301	3.776	4.140	3.324	2.238	3.105	2.210	4.192	31.478
38	2.656	3.060	3.776	2.919	3.324	2.238	4.357	2.210	2.939	27.479
39	2.656	2.177	3.776	2.919	3.324	2.238	3.105	3.662	4.192	28.049
40	2.656	3.060	3.776	1.734	2.038	2.238	4.357	2.210	4.192	26.261
41	4.192	3.060	2.273	4.140	2.714	2.238	4.357	2.210	2.939	28.122
42	2.656	4.301	2.273	2.919	2.714	2.238	3.105	2.210	2.939	25.354
43	4.192	3.060	3.776	4.140	2.038	3.687	4.357	2.210	1.734	29.194
44	4.192	3.060	3.776	2.919	2.038	2.238	3.105	2.210	4.192	27.730
45	4.192	4.301	3.776	4.140	4.351	3.687	3.105	2.210	2.939	32.700
46	4.192	4.301	3.776	4.140	4.351	3.687	3.105	3.662	4.192	35.405
47	2.656	3.060	2.273	4.140	4.351	3.687	4.357	3.662	4.192	32.377
48	2.656	2.177	3.776	4.140	4.351	3.687	4.357	3.662	2.939	31.745
49	4.192	3.060	3.776	4.140	4.351	2.238	3.105	3.662	4.192	32.714
50	2.656	3.060	2.273	2.919	3.324	3.687	3.105	2.210	2.939	26.173
51	2.656	2.177	3.776	2.919	4.351	3.687	4.357	3.662	4.192	31.777
52	4.192	4.301	3.776	4.140	4.351	3.687	3.105	2.210	4.192	33.953
53	4.192	4.301	2.273	4.140	3.324	3.687	4.357	3.662	4.192	34.127
54	2.656	3.060	2.273	4.140	4.351	2.238	3.105	3.662	2.939	28.422
55	4.192	4.301	3.776	4.140	4.351	3.687	4.357	3.662	4.192	36.657
56	2.656	3.060	3.776	4.140	4.351	3.687	4.357	3.662	4.192	33.880
57	4.192	4.301	1.000	4.140	4.351	3.687	4.357	1.000	4.192	31.219
58	4.192	4.301	3.776	4.140	4.351	3.687	4.357	3.662	4.192	36.657
TOTAL	201.544	201.544	186.389	201.544	186.389	176.814	201.544	176.814	201.544	1734.127

Lampiran 5: Data *Successive Interval* (Lanjutan)

Variabel Y (Kinerja Pegawai)

NO	Y.1	Y.2	Y.3	Y.4	Y.5	Y.6	Y.7	Y.8	Y.9	Y.10	TOTAL
1	3.904	1.000	1.000	2.721	2.282	1.000	2.104	1.000	2.191	3.119	20.321
2	2.415	2.011	1.000	2.721	2.282	2.647	2.104	2.709	2.191	2.348	22.428
3	3.904	2.011	3.355	2.721	3.695	2.030	3.395	4.249	3.568	2.348	31.277
4	3.904	1.000	3.355	1.000	3.695	1.000	3.395	1.000	3.568	1.000	22.918
5	1.000	2.521	1.000	2.721	1.000	2.647	1.000	2.709	1.000	3.119	18.716
6	3.904	1.000	3.355	1.883	3.695	2.030	3.395	1.959	2.191	2.348	25.761
7	3.904	2.011	2.045	3.344	3.695	2.030	3.395	3.301	2.191	2.348	28.265
8	3.904	2.011	2.045	2.721	3.695	2.030	3.395	2.709	2.191	2.348	27.050
9	2.415	2.011	2.045	2.721	2.282	2.647	1.000	2.709	1.000	3.119	21.949
10	2.415	2.011	2.045	3.344	2.282	2.030	2.104	3.301	3.568	3.119	26.220
11	2.415	2.011	2.045	3.344	2.282	2.030	2.104	2.709	2.191	2.348	23.479
12	2.415	2.011	2.045	2.721	2.282	2.647	1.000	2.709	1.000	3.119	21.949
13	3.904	1.000	3.355	4.329	3.695	3.347	3.395	3.301	3.568	4.387	34.281
14	3.904	2.011	2.045	2.721	1.000	4.478	1.000	2.709	1.000	3.119	23.987
15	2.415	2.011	2.045	2.721	2.282	2.030	2.104	1.959	2.191	2.348	22.107
16	2.415	2.011	2.045	2.721	2.282	2.647	1.000	1.959	2.191	2.348	21.619
17	3.904	3.593	3.355	4.329	3.695	3.347	3.395	4.249	3.568	4.387	37.822
18	3.904	3.593	3.355	4.329	3.695	4.478	3.395	4.249	3.568	4.387	38.952
19	3.904	3.593	3.355	4.329	3.695	3.347	3.395	4.249	3.568	4.387	37.822
20	3.904	3.593	3.355	4.329	3.695	3.347	3.395	4.249	3.568	4.387	37.822
21	3.904	3.593	3.355	4.329	3.695	3.347	3.395	4.249	3.568	4.387	37.822
22	3.904	3.593	3.355	4.329	3.695	3.347	3.395	4.249	3.568	4.387	37.822
23	3.904	3.593	3.355	4.329	3.695	3.347	3.395	4.249	3.568	4.387	37.822
24	3.904	3.593	2.045	2.721	1.000	1.000	1.000	2.709	3.568	3.119	24.658
25	3.904	2.717	3.355	4.329	3.695	3.347	3.395	3.301	3.568	3.497	35.109
26	3.904	3.593	3.355	4.329	3.695	3.347	3.395	4.249	3.568	4.387	37.822
27	2.415	2.717	3.355	2.721	3.695	3.347	3.395	4.249	3.568	4.387	33.850
28	2.415	3.593	3.355	4.329	3.695	4.478	3.395	2.709	1.000	4.387	33.355
29	2.415	2.011	2.045	1.883	2.282	2.030	2.104	1.959	2.191	2.348	21.269
30	2.415	3.593	3.355	4.329	3.695	4.478	3.395	2.709	3.568	4.387	35.923
31	3.904	2.521	3.355	4.329	3.695	3.347	2.104	3.301	3.568	4.387	34.511
32	3.904	3.593	3.355	4.329	3.695	4.478	3.395	4.249	2.191	3.119	36.307
33	3.904	3.593	2.045	4.329	2.282	3.347	3.395	4.249	2.191	3.497	32.832
34	2.415	3.593	2.045	1.883	2.282	2.647	2.104	2.709	2.191	3.119	24.988
35	2.415	2.521	1.000	2.721	2.282	2.030	2.104	2.709	2.191	2.348	22.321
36	2.415	1.000	1.000	3.344	3.695	2.030	1.000	1.959	2.191	3.119	21.753
37	2.415	2.717	3.355	3.344	3.695	4.478	3.395	4.249	3.568	4.387	35.603
38	3.904	2.717	2.045	3.344	2.282	4.478	3.395	4.249	2.191	3.497	32.102
39	2.415	2.521	3.355	3.344	3.695	3.347	2.104	3.301	3.568	4.387	32.037
40	2.415	1.000	1.000	1.883	2.282	2.030	2.104	1.959	3.568	2.348	20.589
41	2.415	2.011	2.045	2.721	3.695	2.030	3.395	1.959	2.191	2.348	24.811
42	2.415	2.011	1.000	1.883	2.282	4.478	2.104	1.959	2.191	2.348	22.671
43	2.415	2.011	2.045	3.344	3.695	2.030	2.104	1.959	2.191	2.348	24.143
44	3.904	2.011	2.045	4.329	2.282	2.647	2.104	2.709	2.191	2.348	26.570
45	3.904	3.593	3.355	4.329	2.282	3.347	3.395	4.249	3.568	3.497	35.519
46	3.904	3.593	3.355	4.329	2.282	3.347	2.104	3.301	3.568	3.497	33.280
47	2.415	3.593	2.045	3.344	2.282	3.347	2.104	3.301	2.191	4.387	29.009
48	3.904	3.593	3.355	2.721	2.282	3.347	2.104	3.301	3.568	4.387	32.562
49	3.904	3.593	3.355	4.329	2.282	3.347	2.104	4.249	2.191	3.497	32.851
50	3.904	3.593	3.355	4.329	3.695	3.347	2.104	3.301	2.191	3.497	33.316
51	3.904	3.593	3.355	4.329	2.282	3.347	1.000	3.301	3.568	4.387	33.066
52	2.415	3.593	3.355	4.329	3.695	3.347	2.104	3.301	3.568	4.387	34.094
53	2.415	2.717	3.355	3.344	2.282	3.347	3.395	4.249	3.568	4.387	33.059
54	3.904	3.593	3.355	4.329	2.282	2.647	3.395	4.249	3.568	4.387	35.708
55	1.000	3.593	3.355	4.329	3.695	4.478	3.395	4.249	3.568	4.387	36.048
56	3.904	3.593	3.355	4.329	3.695	3.347	2.104	4.249	3.568	4.387	36.531
57	3.904	3.593	3.355	4.329	1.000	4.478	3.395	2.709	3.568	4.387	34.717
58	3.904	3.593	3.355	4.329	3.695	4.478	3.395	4.249	3.568	4.387	38.952
TOTAL	186.389	158.855	154.523	201.544	169.632	176.814	150.650	186.389	163.805	201.545	1750.144

Lampiran 6: Uji Validitas

Variabel X₁ (Kompetensi)

R_{Tabel} 0,2586

		Correlations											
		X1.1	X1.2	X1.3	X1.4	X1.5	X1.6	X1.7	X1.8	X1.9	X1.10	X1.11	TOTAL X1
X1.1	Pearson Correlation	1	.254	.385**	.079	.397**	.137	.250	.132	.094	.130	.142	.316*
	Sig. (2-tailed)		.055	.003	.555	.002	.305	.059	.323	.481	.330	.287	.016
	N	58	58	58	58	58	58	58	58	58	58	58	58
X1.2	Pearson Correlation	.254	1	.247	.585**	.252	.584**	.290*	.516**	.480**	.279*	.436**	.735**
	Sig. (2-tailed)	.055		.062	.000	.056	.000	.027	.000	.000	.034	.001	.000
	N	58	58	58	58	58	58	58	58	58	58	58	58
X1.3	Pearson Correlation	.385**	.247	1	.113	.512**	.218	.477**	.306*	.044	.576**	.304*	.462**
	Sig. (2-tailed)	.003	.062		.396	.000	.100	.000	.020	.746	.000	.020	.000
	N	58	58	58	58	58	58	58	58	58	58	58	58
X1.4	Pearson Correlation	.079	.585**	.113	1	.199	.459**	.211	.695**	.693**	.342**	.575**	.798**
	Sig. (2-tailed)	.555	.000	.396		.135	.000	.112	.000	.000	.009	.000	.000
	N	58	58	58	58	58	58	58	58	58	58	58	58
X1.5	Pearson Correlation	.397**	.252	.512**	.199	1	.207	.543**	.276*	.117	.551**	.289*	.465**
	Sig. (2-tailed)	.002	.056	.000	.135		.119	.000	.036	.393	.000	.028	.000
	N	58	58	58	58	58	58	58	58	58	58	58	58
X1.6	Pearson Correlation	.137	.584**	.218	.459**	.207	1	.359**	.486**	.419**	.238	.628**	.693**
	Sig. (2-tailed)	.305	.000	.100	.000	.119		.056	.000	.001	.072	.000	.000
	N	58	58	58	58	58	58	58	58	58	58	58	58
X1.7	Pearson Correlation	.250	.290*	.477**	.211	.543**	.359**	1	.286*	.205	.456**	.427**	.539**
	Sig. (2-tailed)	.059	.027	.000	.112	.000	.006		.024	.122	.000	.001	.000
	N	58	58	58	58	58	58	58	58	58	58	58	58
X1.8	Pearson Correlation	.132	.516**	.306*	.695**	.276*	.486**	.296*	1	.640**	.489**	.520**	.831**
	Sig. (2-tailed)	.323	.000	.020	.000	.036	.000	.024		.000	.000	.000	.000
	N	58	58	58	58	58	58	58	58	58	58	58	58
X1.9	Pearson Correlation	.094	.480**	.044	.693**	.117	.419**	.205	.640**	1	.216	.464**	.720**
	Sig. (2-tailed)	.481	.000	.746	.000	.383	.001	.122	.000		.104	.000	.000
	N	58	58	58	58	58	58	58	58	58	58	58	58
X1.10	Pearson Correlation	.130	.279*	.576**	.342**	.551**	.238	.496**	.489**	.216	1	.353**	.582**
	Sig. (2-tailed)	.330	.034	.000	.009	.000	.072	.000	.000	.104		.007	.000
	N	58	58	58	58	58	58	58	58	58	58	58	58
X1.11	Pearson Correlation	.142	.436**	.304*	.575**	.289*	.628**	.427**	.520**	.464**	.353**	1	.748**
	Sig. (2-tailed)	.287	.001	.020	.000	.028	.000	.001	.000	.000	.007		.000
	N	58	58	58	58	58	58	58	58	58	58	58	58
TOTAL X1	Pearson Correlation	.316*	.735**	.462**	.798**	.485**	.693**	.539**	.831**	.720**	.582**	.748**	1
	Sig. (2-tailed)	.016	.000	.000	.000	.000	.000	.000	.000	.000	.000	.000	
	N	58	58	58	58	58	58	58	58	58	58	58	58

** Correlation is significant at the 0.01 level (2-tailed).

* Correlation is significant at the 0.05 level (2-tailed).

Lampiran 6: Uji Validitas (Lanjutan)

Variabel X₂ (Disiplin Kerja)

R_{Tabel} 0,2586

		Correlations									
		X2.1	X2.2	X2.3	X2.4	X2.5	X2.6	X2.7	X2.8	X2.9	TOTALX2
X2.1	Pearson Correlation	1	.256	.397**	.328*	.073	.487**	.093	.349**	.183	.445**
	Sig. (2-tailed)		.052	.002	.012	.587	.000	.490	.007	.168	.000
	N	58	58	58	58	58	58	58	58	58	58
X2.2	Pearson Correlation	.256	1	-.011	.625**	.346**	.156	.538**	-.051	.583**	.654**
	Sig. (2-tailed)	.052		.935	.000	.008	.242	.000	.705	.000	.000
	N	58	58	58	58	58	58	58	58	58	58
X2.3	Pearson Correlation	.397**	-.011	1	.103	.167	.482**	.192	.557**	.192	.422**
	Sig. (2-tailed)	.002	.935		.441	.209	.000	.149	.000	.150	.001
	N	58	58	58	58	58	58	58	58	58	58
X2.4	Pearson Correlation	.328*	.625**	.103	1	.482**	.285*	.589**	.156	.580**	.766**
	Sig. (2-tailed)	.012	.000	.441		.000	.030	.000	.242	.000	.000
	N	58	58	58	58	58	58	58	58	58	58
X2.5	Pearson Correlation	.073	.346**	.167	.482**	1	.414**	.464**	.302*	.549**	.722**
	Sig. (2-tailed)	.587	.008	.209	.000		.001	.000	.021	.000	.000
	N	58	58	58	58	58	58	58	58	58	58
X2.6	Pearson Correlation	.487**	.156	.482**	.285*	.414**	1	.366**	.631**	.339**	.836**
	Sig. (2-tailed)	.000	.242	.000	.030	.001		.005	.000	.009	.000
	N	58	58	58	58	58	58	58	58	58	58
X2.7	Pearson Correlation	.093	.538**	.192	.589**	.464**	.366**	1	.199	.727**	.766**
	Sig. (2-tailed)	.490	.000	.149	.000	.000	.005		.134	.000	.000
	N	58	58	58	58	58	58	58	58	58	58
X2.8	Pearson Correlation	.349**	-.051	.557**	.156	.302*	.631**	.199	1	.300*	.498**
	Sig. (2-tailed)	.007	.705	.000	.242	.021	.000	.134		.022	.000
	N	58	58	58	58	58	58	58	58	58	58
X2.9	Pearson Correlation	.183	.583**	.192	.580**	.549**	.339**	.727**	.300*	1	.818**
	Sig. (2-tailed)	.168	.000	.150	.000	.000	.009	.000	.022		.000
	N	58	58	58	58	58	58	58	58	58	58
TOTALX2	Pearson Correlation	.445**	.654**	.422**	.766**	.722**	.836**	.766**	.498**	.918**	1
	Sig. (2-tailed)	.000	.000	.001	.000	.000	.000	.000	.000	.000	
	N	58	58	58	58	58	58	58	58	58	58

** Correlation is significant at the 0.01 level (2-tailed).

* Correlation is significant at the 0.05 level (2-tailed).

Lampiran 6: Uji Validitas (Lanjutan)

Variabel X₂ (Disiplin Kerja)

R_{Tabel} 0,2586

		Correlations										
		Y.1	Y.2	Y.3	Y.4	Y.5	Y.6	Y.7	Y.8	Y.9	Y.10	TOTAL Y
Y.1	Pearson Correlation	1	.248	.442**	.347**	.153	.107	.334*	.333*	.335*	.202	.417**
	Sig. (2-tailed)		.061	.001	.008	.252	.426	.010	.011	.010	.128	.001
	N	58	58	58	58	58	58	58	58	58	58	58
Y.2	Pearson Correlation	.248	1	.597**	.656**	.092	.650**	.312*	.720**	.401**	.765**	.838**
	Sig. (2-tailed)	.061		.000	.000	.490	.000	.017	.000	.002	.000	.000
	N	58	58	58	58	58	58	58	58	58	58	58
Y.3	Pearson Correlation	.442**	.597**	1	.567**	.491**	.510**	.540**	.627**	.594**	.664**	.809**
	Sig. (2-tailed)	.001	.000		.000	.000	.000	.000	.000	.000	.000	.000
	N	58	58	58	58	58	58	58	58	58	58	58
Y.4	Pearson Correlation	.347**	.656**	.567**	1	.313*	.602**	.336**	.695**	.372**	.726**	.822**
	Sig. (2-tailed)	.008	.000	.000		.017	.000	.010	.000	.004	.000	.000
	N	58	58	58	58	58	58	58	58	58	58	58
Y.5	Pearson Correlation	.153	.092	.491**	.313*	1	.150	.569**	.291*	.358**	.257	.425**
	Sig. (2-tailed)	.252	.490	.000	.017		.262	.000	.027	.006	.051	.001
	N	58	58	58	58	58	58	58	58	58	58	58
Y.6	Pearson Correlation	.107	.650**	.510**	.602**	.150	1	.300*	.616**	.189	.732**	.753**
	Sig. (2-tailed)	.426	.000	.000	.000	.262		.022	.000	.156	.000	.000
	N	58	58	58	58	58	58	58	58	58	58	58
Y.7	Pearson Correlation	.334*	.312*	.540**	.336**	.569**	.300*	1	.466**	.470**	.326*	.578**
	Sig. (2-tailed)	.010	.017	.000	.010	.000	.022		.000	.000	.013	.000
	N	58	58	58	58	58	58	58	58	58	58	58
Y.8	Pearson Correlation	.333*	.720**	.627**	.695**	.291*	.616**	.466**	1	.478**	.723**	.867**
	Sig. (2-tailed)	.011	.000	.000	.000	.027	.000	.000		.000	.000	.000
	N	58	58	58	58	58	58	58	58	58	58	58
Y.9	Pearson Correlation	.335*	.401**	.584**	.372**	.358**	.189	.470**	.478**	1	.512**	.801**
	Sig. (2-tailed)	.010	.002	.000	.004	.006	.156	.000	.000		.000	.000
	N	58	58	58	58	58	58	58	58	58	58	58
Y.10	Pearson Correlation	.202	.765**	.664**	.726**	.257	.732**	.326*	.723**	.512**	1	.884**
	Sig. (2-tailed)	.128	.000	.000	.000	.051	.000	.013	.000	.000		.000
	N	58	58	58	58	58	58	58	58	58	58	58
TOTAL Y	Pearson Correlation	.417**	.838**	.809**	.822**	.425**	.753**	.578**	.867**	.801**	.884**	1
	Sig. (2-tailed)	.001	.000	.000	.000	.001	.000	.000	.000	.000	.000	
	N	58	58	58	58	58	58	58	58	58	58	58

** Correlation is significant at the 0.01 level (2-tailed).

* Correlation is significant at the 0.05 level (2-tailed).

Lampiran 7: Uji Reliabilitas**Variabel X₁ (Kompetensi)****Reliability Statistics**

Cronbach's Alpha	N of Items
.855	11

Variabel X₂ (Disiplin Kerja)**Reliability Statistics**

Cronbach's Alpha	N of Items
.824	9

Variabel X₂ (Disiplin Kerja)**Reliability Statistics**

Cronbach's Alpha	N of Items
.888	10

Lampiran 8: Analisis Jalur (Path Analysis)

Correlations

		TOTAL.X1	TOTAL.X2
TOTAL.X1	Pearson Correlation	1	.855**
	Sig. (2-tailed)		.000
	N	58	58
TOTAL.X2	Pearson Correlation	.855**	1
	Sig. (2-tailed)	.000	
	N	58	58

** . Correlation is significant at the 0.01 level (2-tailed).

Coefficients^a

Model		Unstandardized Coefficients		Standardized Coefficients	t	Sig.	Collinearity Statistics	
		B	Std. Error	Beta			Tolerance	VIF
1	(Constant)	-2.634	1.969		-1.338	.186		
	TOTAL.X1	.801	.101	.793	7.915	.000	.270	3.707
	TOTAL.X2	.182	.124	.148	1.476	.146	.270	3.707

a. Dependent Variable: TOTAL.Y

Model Summary^b

Model	R	R Square	Adjusted R Square	Std. Error of the Estimate
1	.923 ^a	.851	.846	2.454457

a. Predictors: (Constant), TOTAL.X2, TOTAL.X1

b. Dependent Variable: TOTAL.Y

ANOVA^a

Model		Sum of Squares	df	Mean Square	F	Sig.
1	Regression	1893.720	2	946.860	157.172	.000 ^b
	Residual	331.340	55	6.024		
	Total	2225.059	57			

a. Dependent Variable: TOTAL.Y

b. Predictors: (Constant), TOTAL.X2, TOTAL.X1