

**Gmail**

99+ Mail

Compose

21,417

Inbox

Starred

Snoozed

Important

Sent

Drafts 80

Categories

More

Labels +

Notes

Catatan Harian Prodi

Search: Semi-Automatic Machine with Programmable Logic Controller in the Mendong

Navigation icons: back, archive, flag, trash, mail, clock, refresh, download, print, menu

[ICSECC] Results of Paper Review and Inspection Inbox x

 **Secretariat of ICSECC** <icsecc@president.ac.id>  
to me, firmansyah, supratman, sutisna

Dear Author(s),

we have reviewed and inspected your final manuscript (FM). Attached please find the result of your FM review and inspection. Please improve your paper base FM.

We send also the conference template, for your reference.

Please indicate the changes you made to your FM by using **YELLOW/BLUE HIGHLIGHTS**. Please send the improved FM (or FM2) to [icsecc@president.ac.id](mailto:icsecc@president.ac.id). example: FM2.088.doc.

Upon receiving, we will check your FM2. Please be reminded, that only papers that follow the checklist will proceed to the publication process to IEEE Xplore a

Best regards,  
ICSECC Publication Chair

5 Attachments • Scanned by Gmail

--	--	--	--	--

 **NURUL HIRON** <hiron@unsil.ac.id>  
to FIRMANSYAH

5 Attachments • Scanned by Gmail

--	--	--	--	--

Paper number	Paper number	086
Email	Email	hiron@unsil.ac.id; firmansyah@unsil.ac.id; supratman@unsil.ac.id; sutisna@unsil.ac.id;
Paper title	Paper title	Semi-Automatic Machine with Programmable Logic Controller in the Mendong Woven industrial
Title Format, Abstract writing, keywords	<p>1) Format of FM must be according to conference template: font size, length of abstract, number of keywords.</p> <p>2) Abstract must contain conclusion.</p> <p>3) Maximum number of keywords 5.</p> <p>4) No repetition of word for the title</p>	Conclusion Section must have number. Just like I. Introduction, and so on.
Name of authors (combine authors with identical affiliation)	<p>For the same affiliation, combine multiple authors in one column.</p> <p>More than 1 email address can be written on the last line</p>	<p>Combine the 1<sup>st</sup> and 4<sup>th</sup> author in one column, since they are from the same affiliations. 3<sup>rd</sup> author and 4<sup>th</sup> author in different columns.</p> <p>So the authors can be shown in 3 column.</p> <p>See again the example on how to write authors with same affiliations (attachment of the email).</p>
Fonts according to template	In general, the section title, body of the paragraph, figure caption, table caption, size and type of fonts, must follow the template of the conference.	In general, the conference template is already followed.
Equations writings	<p>1) The way to write the equation must follow the conference template with center alignment for equation and equation number right justified,</p> <p>2) Equations may not be in the form of screenshot, but equations must be typed using Word alphabet, Equation Editor, or Equation Tools</p>	Equation 1 is not centered. Otherwise the equations are okay.
Picture resolution and font size inside picture	<p>1) Pictures/figures must be of high resolution,</p> <p>2) Font size used inside the picture/figure must be equal to Times New Roman size 7 and readable.</p>	<p>Figure 6, 7, 8, 9, 10: delete the frame (box) around the figures. Delete the title of the figures, because the figures already have figure caption (the information about figure should be only in the caption, no title needed).</p> <p>See below as example</p>

<p>Figure caption and Table caption to be consistent in text</p>	<ol style="list-style-type: none"> <li>1) Consistency in referring, if in caption the author uses Figure, then in paragraph body the citation must be Figure, too. If in caption the author uses Fig., then in citation should use Fig, too.</li> <li>2) Size and style of caption for Figure and Table must be Times New Roman size 8 (according to template)</li> <li>3) The numbering of Figure uses italic number (1,2,3), the numbering of Table uses roman number (I,II,III), for example Fig. 1 or Figure 1, Table I)</li> </ol>	<p>Since the caption uses Fig, then all reference in text should use <b>Fig</b>, too.</p> <p>Do not use 0 like 01, 02, 03, and so on. Directly write Fig.1, Fig.2, Fig.3, and so on.</p>
<p>Figure/Table must first found in text before they appear</p>	<ol style="list-style-type: none"> <li>1) Figure and Table must first be mentioned in text before the Figure and Table appears in the paper.</li> <li>2) Referring to Figure/Table must directly use their number, not using words such as "next table", "the following table", and so on...</li> <li>3) Each Figure/Table must be mentioned at least 1 time in the paper,</li> <li>4) Table and Figure should be placed not too far from the place where they are referred to inside the body of the paragraph</li> </ol>	<p>OK. Done completely for all figures and tables.</p>
<p>Writing the reference (style, order of appearance)</p>	<ol style="list-style-type: none"> <li>1) Check whether the writing of the references already follows the IEEE style,</li> <li>2) Reference must be cited in order of appearance</li> <li>3) Maximum 25% Indonesian references. The rest must be in English.</li> </ol>	<p>The writing of all citations is wrong. Look again the IEEE conference template.</p> <p>There are too many references written in Bahasa Indonesia. Maximum number of references in Bahasa Indonesia is 25% only. Please change the</p>
<p>Updated reference must</p>	<p>Paper must contain citations which are published in the last 3 years (references</p>	<p>Check again that at least 2 references from year 2016, 2017,</p>

be used (last 3 years)	must update, proven by including papers/journal/books which are 3 years old or less)	2018, or 2019.
English Writing and Grammar	<p>The general assessment of the English level of the paper. Acceptable or not?</p> <p>The committee can help by providing professional proof reader (sworn translator) with the price of Rp100.000/page.</p> <p>The author is suggested to provide proof read by himself/herself.</p> <p>Publication may be rejected if there is no significant improvement in level of English writing.</p>	OK.
Number of pages (minimum 4, maximum 6)	The paper must be at least 4 pages but maximum 6 pages.	OK.
Conclusion does not have to be with recommendation (reformulate recommendation )	<p>Check the writing and the content of Conclusion section.</p> <p>It should be written in style of research conclusion, but not in style of a thesis conclusion, final project conclusion.</p>	Conclusion section title must have number. OK.
70% of the reviewer inputs must be accommodated in Final Manuscript	Final manuscript (FM) must accommodate at least 70% of reviewers' input, if the FM is compared to the Review manuscript (RM)	Please follow the input from reviewer, as given as comments in the attached document.
The revised final manuscript must include highlights of changes made by author	<p>Author must send back the improvement of FM, named FM2 to icsecc@president.ac.id.</p> <p>Author MUST give highlights to parts where the author conducts the improvement, showing the difference between FM2 and the previous FM.</p>	<p>Above are the inputs from the Publication Chair of the ICSECC Conference.</p> <p>Please conduct the review of your final manuscript (FM) according to the items mentioned above.</p> <p>You now have 7 days to revise your paper according to the input. Please send again your revised final manuscript (FM2) to icsecc@president.ac.id.</p> <p>IN THE FM2, PLEASE SHOW THE CHANGES THAT YOU MADE BY GIVING YELLOW HIGHLIGHTS TO THE CHANGES</p>

		Your paper will proceed to publication phase only after it passes the checklist of the Publication Chair.
Document Format	Submitted FM must be in DOC, may not be in other format.  DOCX or PDF is not acceptable.	OK.

# Semi-Semi-Automatic Machine with Programmable Logic Controller in the Mendong Woven industrial

Nurul Hiron  
Electrical Department  
Faculty of Engineering  
Siliwangi University  
Indonesia  
hiron@unsil.ac.id

Firmansyah M S Nursuwars  
Informatics Department  
Faculty of Engineering  
Siliwangi University  
Indonesia  
firmansyah@unsil.ac.id

Supratman  
Mathematic Department  
Faculty of Education  
Siliwangi University  
Indonesia  
supratman@unsil.ac.id

Sutisna  
Electrical Department  
Faculty of Engineering  
Siliwangi University  
Indonesia  
sutisna@unsil.ac.id

**Abstract**—The focus of this paper is proposed of to propose a design of semi-automatic saving mendong (Fimbristylis umbellaris) weaving machines using a programmable logic controller (PLC). The background of this paper is that mendong weaving machines are tools used in producing mendong mats, but until now, the machines used are still manual. The proposed method is to design a machine using a PLC as the central controller by using six ultrasonic sensors and a DC motor to drive the lever to mendong weaving. This paper concludes that the total electrical power consumed by three systems is 42.38 watts without load, and 104.59 watts with a load. This paper concludes that the sum of electric power consumed by three systems is 42.38 watts without load and 104.59 watts with burden. The most significant sequential electricity consumption is the pressing system, then the roll-up system and the lowest in the embroider system. Based on the results of testing separately, the components used are Mechanical devices, PLC, Power Supply, ultrasonics sensors, DC motor drive that works well. The overall test is a weaving time of 42.5 minutes with a length of webbing of 1 meter, spending 37.27 WH.

**Keywords**—Tenuweaving, mendong, energy, PLC, ultrasonic

## I. INTRODUCTION

Currently making creating mats is done by weaving techniques. The process of matting preparing this mat is relatively long. The production produced by a craftsman in one day is an average of 1 mat, which is 12 meters. Weaving using a mendong weaving machine takes ± 1 hour 10 minutes for 1 meter of the mat and manually requires ± 3 hours for 1 meter of webbing [1]. While the results of woven from manual techniques have disadvantages, including the density of webbing from mendong mats that are not the same (not homogeneous), causing rejection of by potential consumers and less durable products, that are not durable.

Mendong (Fimbristylis umbellaris) or also called purun #at# is one type of grass that lives in the swamp, including tribal members Cyperaceae [2]. This plant produces woven material, so it is cultivated in some areas in Indonesia, especially in Ambarawa, Middle-Central Java. There are a lot of these types of plants growing around swamps and commonly used by local people to be cultivated into a variety of crafts.

Automation technology using programmable controllers such as PLC has been widely used in large industries. PLC also allows providing ease of changing orders, system work procedures, good accuracy, excellent reliability, and fast responses that are readily accepted by the industry [3], [4]. Nevertheless, When PLC is only used in advanced industries, even though PLC has the potential to be used in small industries, the use of PLCs in small industries will result in high productivity increases with good accuracy and reduced production costs. PLC is still rarely used in small industries. At present PLC has the use of PLC, which is only in advanced industries. Especially in small industries that produce mendong matting weaving, it is necessary to implement advanced technologies such as PLC to increase the capacity and quality of mendong production. In this paper, we propose the design of mendong matting weaving machines by using PLC as the central controller.

The control of the proposed mendong weaving machine requires several sensors and an electric motor as a driver. The sensors used are infrared sensors, proximity sensors, limit switches. The electric motor used is a DC motor. The application of automated systems to the mendong weaving machine produced will be of higher quality with a density that is homogeneous, energy efficient, and is easy to use.

### A. Programmable Logic Controller (PLC)

according to the National Electrical Manufacturers Association (NEMA), Programmable Logic Controller (PLC) according to the National Electrical Manufacturers Association (NEMA) is a digital electronic device that uses memory that can be programmed to store instructions from certain functions such as logic, sequential, timing, enumeration, and arithmetic to control the engine from the process [5], [6]–[8]

### B. Architecture of PLC

Fig. 01, shows the internal architecture of a PLC. This architecture consists of a central processing unit (CPU) that contains a microprocessor system, memory, and input/output circuit. The CPU is in charge of controlling and running all operations in the PLC [9]. This device is connected to a timer device with a frequency between 1 s.d 8 MHz [5]. This frequency determines the PLC operating speed. Information in the PLC is transmitted through digital signals. The internal

Commented [i-1]: One column

Commented [AP6]: This is rather confusing

Formatted: Font: Italic, (none), Condensed by 0,05 pt

Commented [AP2]: ? This part is unclear

Formatted: Font: Italic, (none), Condensed by 0,05 pt

Formatted: Font: Italic, (none), Condensed by 0,05 pt

Formatted: Font: Italic, (none), Condensed by 0,05 pt

Formatted: Font: Italic, (none), Condensed by 0,05 pt

Commented [i-3]: More literature study are needed which publish

Commented [i-4]: In the last three years!

Formatted: Font: Italic, (none), Condensed by 0,05 pt

Formatted: Font: Italic, (none), Condensed by 0,05 pt

Formatted: Font: Italic, Condensed by 0,05 pt

Commented [AP5]: Please check this particular term, whether it is already validated

paths through which digital signals pass are called buses. Physically a bus is a number of conductors that electrical signals can pass. The CPU uses a data bus to send data to PLC elements, the address bus to send addresses to data storage locations, while the control bus for signals related to the internal control process. The system bus is used for communication between input/output ports and input/output units

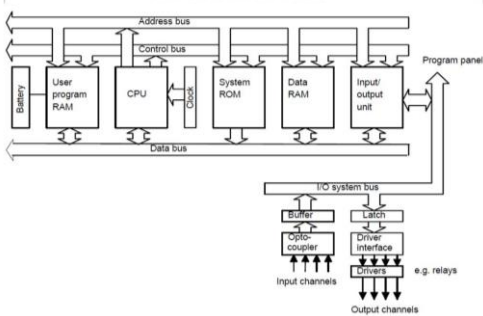


Fig 01. Arsitektur Internal PLC Architecture [10]

### C. Sensor Proximity

The working principle of this type of proximity sensor uses an inductive and capacitive method based on an electromagnetic field (field) around the sensor surface caused by a high-frequency oscillator. The type of metal material that has inductive influence and other capacitive material will affect the amplitude of the oscillation around the sensor (Fig 02). So these objects are detected by the sensor.

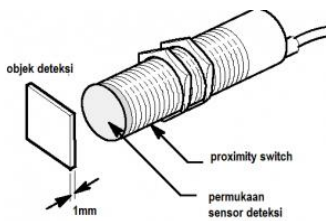


Fig 02. Sensor Proximity [11], [12]

## II. MATERIAL METHOD

### A. Machine Design

The design of the weaving machine consists of the main parts installed on the steel frame, namely explainer units, pressing units, roll-up units. Explainer unit functions to raise and lower the wicker arm so that the plait occurs on the mendong. Pressing unit serves to press the mendong strands on the webbing. Pressing unit is responsible for density in mendong weaving. The roll-up unit serves to roll woven sheets of the mat. The dimensions of the engine frame are 1600mm high, 1500mm long and 930mm of width. The frame is made of steel.

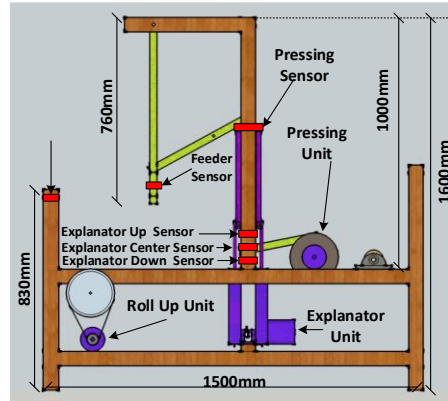


Fig 01. Mendong Weaving Machine Design Using Sensor and Primary Unit. Desain mesin tenun mendong dengan sensor dan unit utama.

### B. Architecture design

Fig 04 is the architectural design of the proposed mendong loom. Weaving machine architecture consists of drive systems, mechanic systems, sensor units. A sensor drive is a drive unit in the form of a moor DC which functions as a driver of a mechanic system, namely a press system, a woven system, and a rolling system. The sensor unit is a sensor that detects the mechanical system movement of the machine which then becomes an input to the PLC which finally gives the system drive command to work.

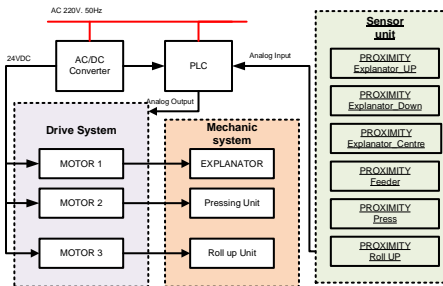


Fig 04. Arsitektur Sistem Architecture System

### C. Flowchart Design

Fig 05, is a machine working system flowchart. Flowchart System starts from the ignition motor works and stops if the ignition sensor detects an object. Then the feeder system works by giving the mendong strands time to put on the thread. After the mendong strand was placed in place, the pressing system works, then the roll-up system rolls soed the mendong is weaved.

Commented [i-7]: Font size mustbe increased

Formatted: Font: Italic, Condensed by 0,05 pt

Commented [i-8]: Quality mustbe improved

Commented [i-9]: Font size mustbe increased

Formatted: English (United States)

Formatted: Body Text, Left

Formatted: Font: 10 pt, Italic, Check spelling and grammar, Condensed by 0,05 pt

Formatted: Font: 10 pt, Italic, Check spelling and grammar, Condensed by 0,05 pt

Formatted: Font: Italic, Condensed by 0,05 pt

Formatted: Font: 10 pt, Italic, Check spelling and grammar, Condensed by 0,05 pt

Formatted: Font: Italic, Condensed by 0,05 pt

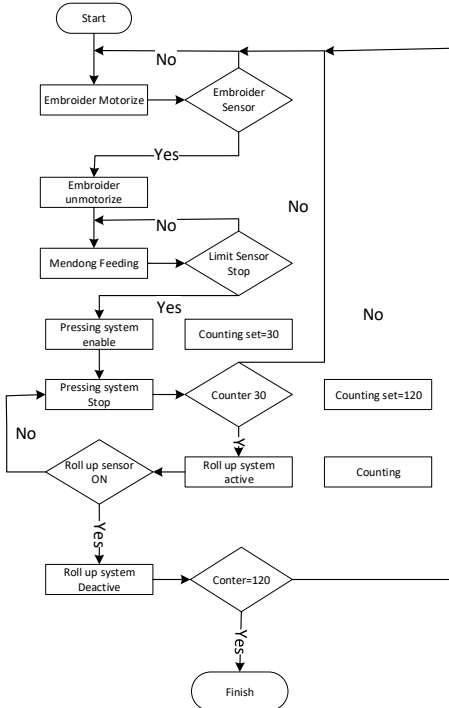


Fig 05. System Flowchart Sistem

#### D. Analysis of Procedure

Engine performance analysis includes two main variables, namely, the first variable is the consistency and accuracy of the machine in making *mendong* webbing, while the second is the energy consumption of the machine in making *mendong* webbing. Electric energy consumption is calculated from the electrical energy consumption of each drive unit, namely energy consumption from the ignition system, electrical energy consumption from the pressing system and electrical energy consumption from the roll-up system. Each system is tested under no conditions and with burdens. No-load testing means that the system works without *mendong* strands, while testing systems with loads is calculated when the system works with the given *mendong* strands. The examination is repeated ten times, and then the average electrical energy consumption is sought using the following equation:

$$\bar{x} = \frac{\sum f(x)}{n} \quad (1)$$

Electrical power parameters are calculated using the following equation:

$$P = E \times I \times \cos \theta \text{ (Watt)} \quad (2)$$

$$Q = E \times I \times \sin \theta \text{ (VAR)} \quad (3)$$

$$S = E \times I \text{ (VA)} \quad (4)$$

The calculation of electric power consumption is calculated using the following equation:

$$E = E \times I \times t \text{ (WH)} \quad (5)$$

Woven density testing is observed from the results of plaiting then compared to the results of plaiting results from conventional machines. Comparison is then used as a density assessment.

### III. RESULTS & DISCUSSION

#### A. Electrical Energy Consumption within the System

Table I shows the test results on the embroidery system for ten repetitions of the test. The testing results show that the average power, it is known that the average electric power without load is 9.05 wWatt, while the average electric power of the embroider system with the load in the form of *mendong* is 9.84 wWatt.

TABLE I. POWER TEST EMBROIDER SYSTEM

Repetition test	Power with load (W)	Power with No-load (W)
1	10.17	9.08
2	10.19	9.07
3	9.06	9.07
4	9.04	9.00
5	9.05	9.07
6	12.44	9.06
7	11.29	9.06
8	9.04	8.99
9	9.04	9.08
10	9.01	9.00
<b>Average</b>	<b>9.84</b>	<b>9.05</b>

Figure 06 is a graph of the electrical power consumed by the embroider system. The difference in electrical power consumed by the embroider system with a load and without load is only 0.79 watts.

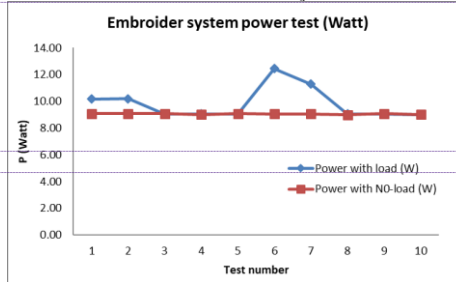


Fig 06. Electric power in the embroidery system Daya listrik pada embroider system

Table II shows the test results on the pressing system for ten repetitions of testing. The test results show that the average power, it is known that the average electric power without load is 17.82 wWatt, while the average electric power of the embroider

Formatted: Font: Italic, Check spelling and grammar

Commented [i-10]: Fig.

Formatted: Font: 10 pt, Italic, Check spelling and grammar, Condensed by 0,05 pt

Formatted: Font: 10 pt, Italic, Check spelling and grammar, Condensed by 0,05 pt

Formatted: Font: 10 pt, Italic, Check spelling and grammar, Condensed by 0,05 pt

Formatted: Font: 10 pt, Italic, Check spelling and grammar, Condensed by 0,05 pt



system with the load in the form of mendong strands is  
73.39 ~~w~~Watts.

Formatted: English (United States)

TABLE II. POWER TEST PRESSING SYSTEM

Repetition test	Power with load (W)	Power with No-load (W)
1	75.87	19.0344
2	74.58	17.6592
3	71.90	17.6748
4	67.83	17.6514
5	67.86	17.6514
6	80.04	17.6904
7	73.32	17.7294
8	71.90	17.706
9	75.97	17.706
10	74.68	17.6904
Average	73.39	17.82

Fig 07 is a graph of the electrical power consumed by the pressing system. The difference in electrical power is consumed by the pressing system where when it is during working with load and without not load is only 55.58 watts. From these results, it can be concluded that on the pressing system, the burden of mendong webbing requires considerable electrical energy compared to the embroider system.

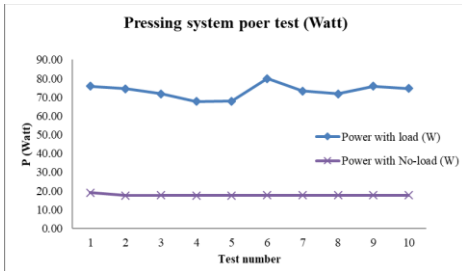


Fig 07. Daya listrik pada pressing system Electric Power within the Pressing System

Tabel III memperlihatkan data hasil pengujian pada roll-up system dengan sebanyak 10 kali pengulangan pengujian. Hasil pengujian memperlihatkan bahwa rata-rata power, diketahui bahwa daya listrik rata-rata tanpa beban adalah 15.52Watt, sementara daya listrik rata-rata roll-up system dengan beban berupa helai mendong adalah 21.36Watt.

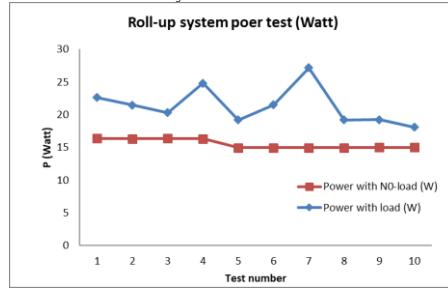
Table III shows the test results data on the roll-up system with as many as ten repetitions of the test. The test results show that the average power of the roll-up system without load is 15.52 wWatts, while the average electric power of the roll-up system with a load of mendong strands is 21.36 wWatts.

TABLE III. POWER TEST ROLL-UP SYSTEM

Repetition test	Power with load (W)	Power with No-load (W)
1	22.61	16.3584
2	21.47	16.3368
3	20.32	16.344
4	24.81	16.308
5	19.20	14.949
6	21.50	14.9556
7	27.16	14.9688
8	19.21	14.9556
9	19.22	14.9886

10	18.09	14.9952
Average	21.36	15.52

Figure 08 is a graph of the electrical power consumed by a roll-up system. The difference in electrical power consumed by the pressing system when working with a load and without load is only 5.84 watts.



Gambar Fig 08. Daya listrik pada Electric Power within the Rroll-up System

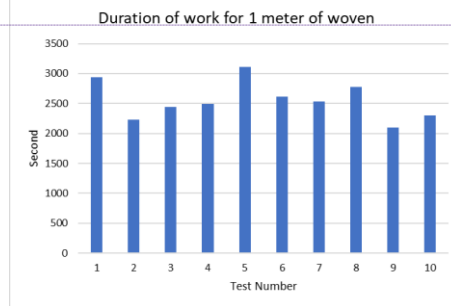
From the test results presented to in Table I, Table II, Table III, it was concluded that the sum of electric power consumed by three systems was 42.38 watts, while the load was 104.59 watts. The most significant sequential electricity consumption is the pressing system, then the roll-up system and the lowest in the embroider system.

Table IV is the result of testing a machine doing processing the weaving mendong weaving as long as 1 meter takes 2551.2 seconds or 42.5 minutes.

TABLE IV. POWER TEST PRESSING SYSTEM

Test number	Duration for 1 meter of woven (second)
1	2934
2	2226
3	2442
4	2490
5	3114
6	2610
7	2532
8	2772
9	2094
10	2298
Average	2551.2

Fig 09 is a test chart of 10 repetitions. From this graph, it is found that the duration needed by the machine in weaving mendong weaving along 1 meter long of mendong is 42.5 minutes.



Formatted: Font: Italic, Check spelling and grammar

Formatted: Font: 10 pt, Italic, Check spelling and grammar

Formatted: Font: Italic, Check spelling and grammar, Condensed by 0,05 pt

Formatted: Font: 10 pt, Italic, Check spelling and grammar

Fig 09. The average duration for one meter of weaving

Fig10 shows the energy consumption (Wh) required by a weaving machine to work for 1 hour by the ten of test repetitions. From the measurement results, it was found that the machine required the energy of 37.27Wh to work making webbing for 1 hour. From these results, it was concluded that the *mendong* machine built was quite energy efficient.

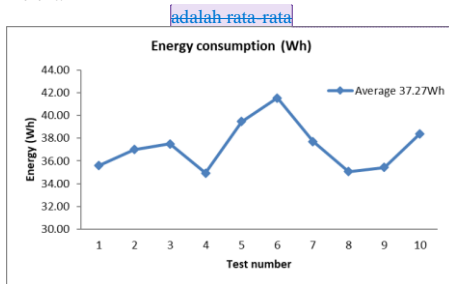
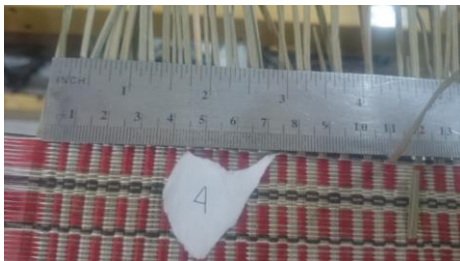


Fig 10. Electrical energy consumption of the machine for one hour of weaving

From the comparison of the results of plaiting from conventional *mendong* weaving machines with the results of the proposed machine, it was obtained that the *mendong* woven from the proposed machine was quite beneficial.



Gambar Fig 11. Hasil uji kerapatan anyaman mendong. The Result of Mendong Density Weaving Experiment

#### CONCLUSIONS

The sensors used are inductive proximity sensors, using six sensors. The proximity sensor has three sensors, namely the upper sensor, center sensor, and bottom sensor, proximity pressing sensor, supplier proximity sensor, and proximity roller sensor. The sensors used can run well according to the program that has been made. It is necessary to add another sensor to protect every system error; for example, when it breaks, there must be a sensor that detects it.

From the data obtained from the drive system test, it was concluded that the sum of the electrical power consumed by three systems was 42.38 watts, while the load was 104.59 wWatts. The most significant sequential electricity consumption is the pressing system, then the roll-up system and the lowest in the embroider system

Based on the results of testing separately, the components used are Mechanical, PLC, Power Supply, Sensors, Drive Motors has been proven to work well. The overall test is a

weaving time of 42.5 minutes with the a length of 1 meter woven 1-meter product, spending 37.27 Wh.

#### ACKNOWLEDGMENT

The financial support from the Kemenristekdikti of Indoensia-Indonesia under the grant of Pengabdian Produk Unggulan Daerah (PPUD). The authors are very grateful to Siliwangi University and Kemenristekdikti for the financial support provided in order to accomplish this work. This work has been and The authors also gratefully acknowledge the helpful comments and suggestions of from the reviewers, which have improved the presentation.

#### REFERENCES

- [1] I. Hilman, P. Studi, P. Geografi, U. Siliwangi, M. Penganyam, and I. Pendahuluan, "Rekayasa teknologi-Teknologi mesin penganyam mendong dalam upaya meningkatkan produktivitas industri tikar mendong di kecamatan purbaru kota tasikmalaya," in *Seminar Nasional Inovasi dan Tren (SNIT) 2015 REKAYASA*, 2015, pp. 109–114.
- [2] R. MEH and A. Ridwan, "Perancangan Pemanfaatan Limbah Mendong Menjadi Pupuk Cair Organik," *J. Rekayasa Sist. dan Ind.*, vol. 2, no. 2, pp. 66–69, 2015.
- [3] F. G. B. Simarmata and R. Dinzi, "( Plc ) Pada Mesin Finger Joint," *SINGUDA ENSIKOM*, vol. 7, no. 2, pp. 61–67, 2014.
- [4] E. Normanyo, F. Husinu, and O. R. Agyare, "Developing a Human Machine Interface ( HMI ) for Industrial Automated Systems using Siemens Simatic WinCC Flexible Advanced Software," *J. Emerg. Trends Comput. Inf. Sci.*, vol. 5, no. 2, pp. 134–144, 2014.
- [5] A. Ravi, K. #1, B. V. Sundeeep, C. Sree, V. #3, and N. Mathews, "The Principle of Programmable Logic Controller and its role in Automation," *Int. J. Eng. Trends Technol.*, vol. 4, no. 3, p. 3, 2013.
- [6] Y. Darusman, "KEARIFAN LOKAL KERAJINAN BORDIR TASIKMALAYA SEBAGAI EKONOMI KREATIF TERBUKA UNTUK MODERN? FKIP," *J. Nonform. Educ.*, vol. 2, no. 2, 2012.
- [7] M. A. Khattak, "IOT Based Intelligent Traffic Control System," in *International Journal for Research in Applied Science and Engineering Technology*, 2017, vol. 5, no. V, pp. 707–711.
- [8] S. Chitra and V. Raghavan, "Conveyor Control Using Programmable Logic Controller," *Int. J. Adv. Res. Technol.*, vol. 3, no. 8, pp. 25–31, 2014.
- [9] S. Sadi and S. R. I. Mulyati, "Ats ( Automatic Transfer Switch ) Berbasis Programmable Logic Controller Cpm1a Automatic Transfer Switch ( Ats ) Based on Programmable Logic Controller Cpm1a," *J. Tek. ; Univ. Muhammadiyah Tangerang*, vol. 8, no. 1, pp. 84–89, 2019.
- [10] W. Bolton, *Programmable Logic Controllers*, Fourth ed. Linacre House, Jordan Hill, Oxford OX2 8DP: ELSEVIER AMSTERDAM, 2006.
- [11] Z. C. and R. C. Luo, "Design and implementation of capacitive proximity sensor using microelectromechanical systems technology," *IEEE Trans. Ind. Electron.*, vol. 45, no. 6, 1998.

Formatted: Font: 10 pt, Italic, Check spelling and grammar

Commented [AP11]: ? which part does this statement belong to?

Commented [AP12]: Incomplete?

Formatted: Font: 10 pt, Italic, Check spelling and grammar, Condensed by 0,05 pt

Formatted: Font: 10 pt, Italic, Check spelling and grammar, Condensed by 0,05 pt

[12] A. Braun, R. Wichert, A. Kuijper, and D. W. Fellner, "Capacitive proximity sensing in smart environments," *J. Ambient Intell.*

*Smart Environ.*, vol. 7, no. 4, 2015.

